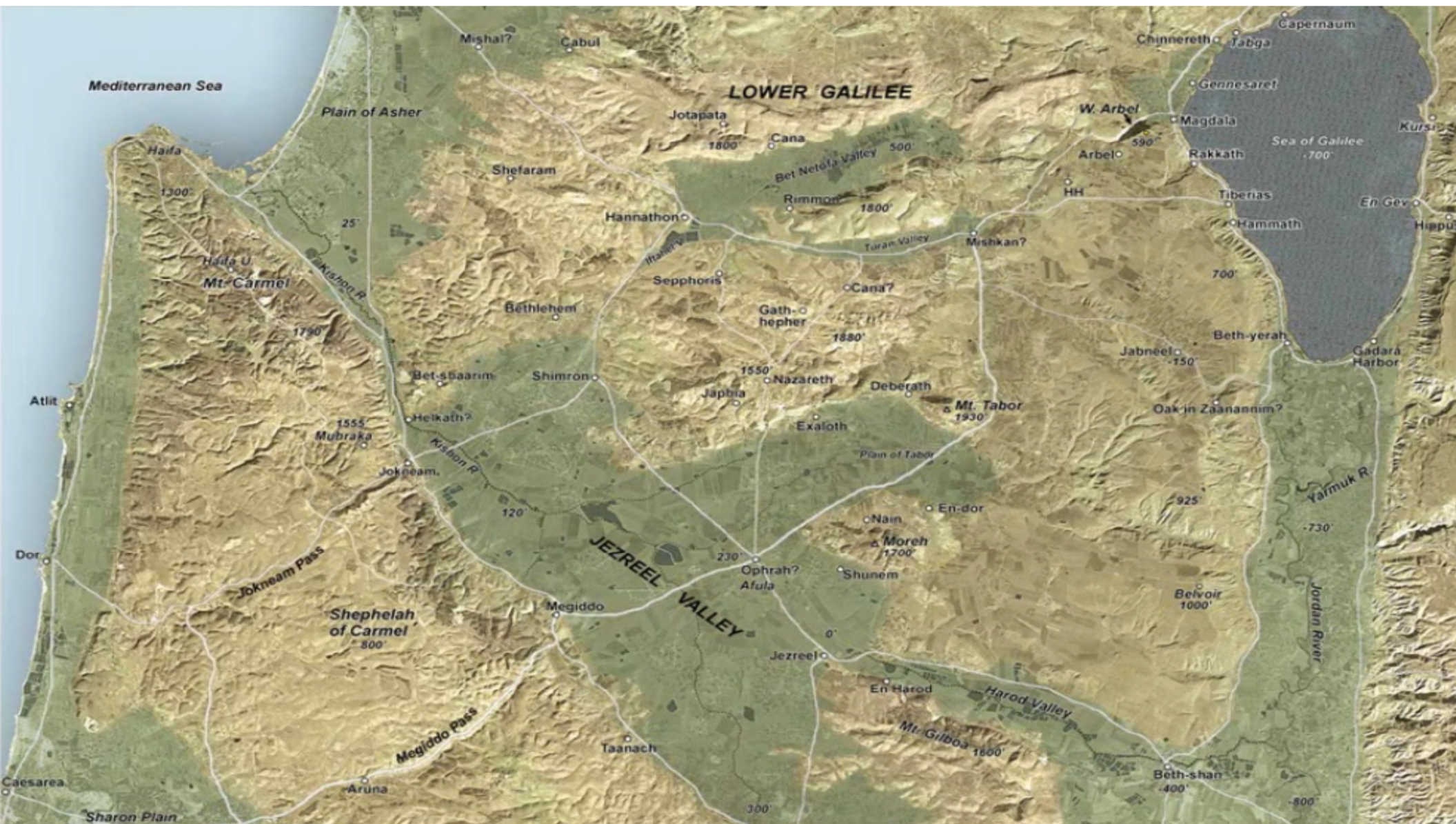
An aerial photograph of the Jezreel Valley, showing a patchwork of agricultural fields in various shades of brown, green, and blue. A winding road or river cuts through the landscape, and a small town or village is visible in the lower right. The sky is a clear, pale blue.

# Jezreel Valley: Lessons Learned From a Judge & a King

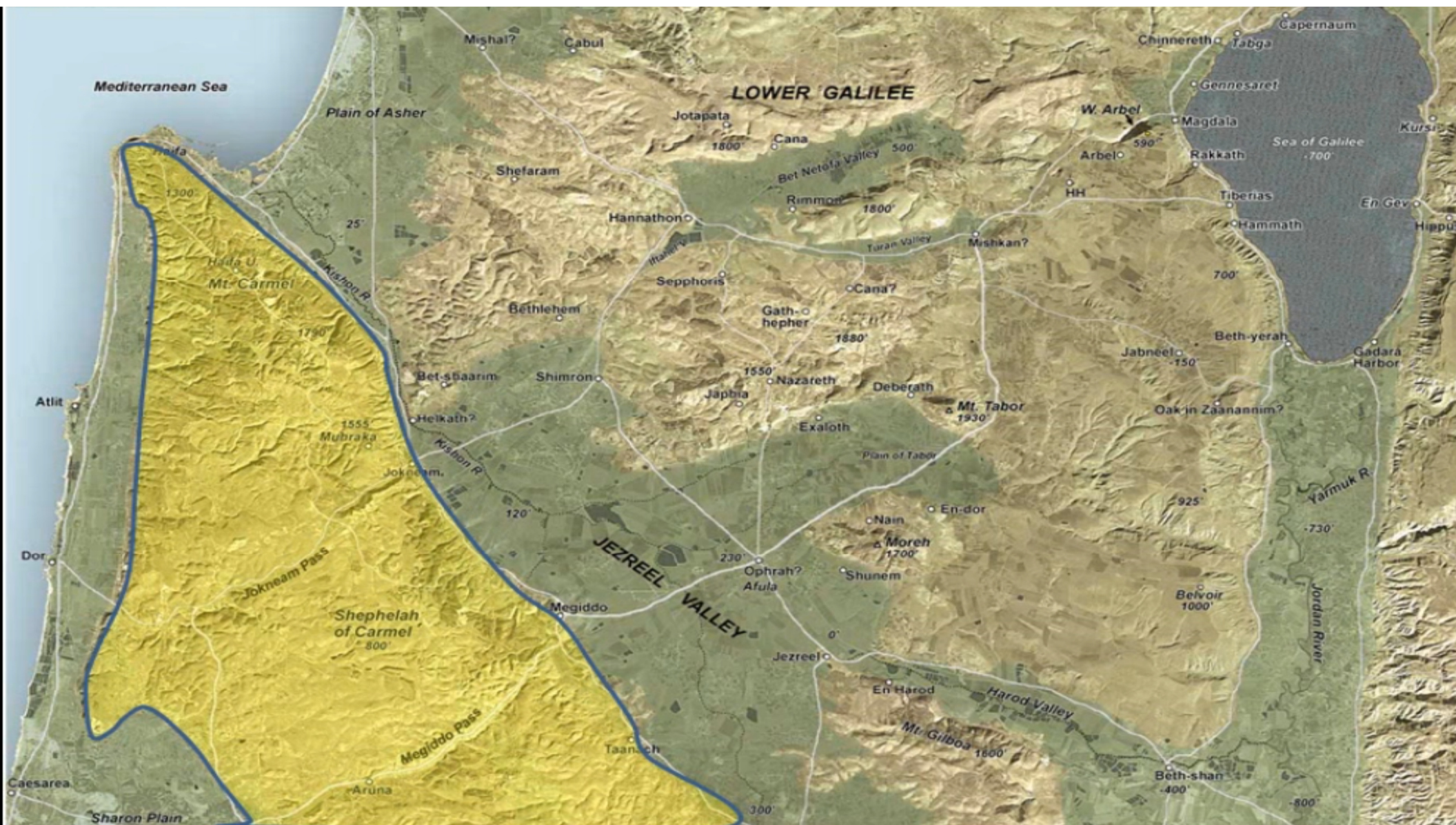




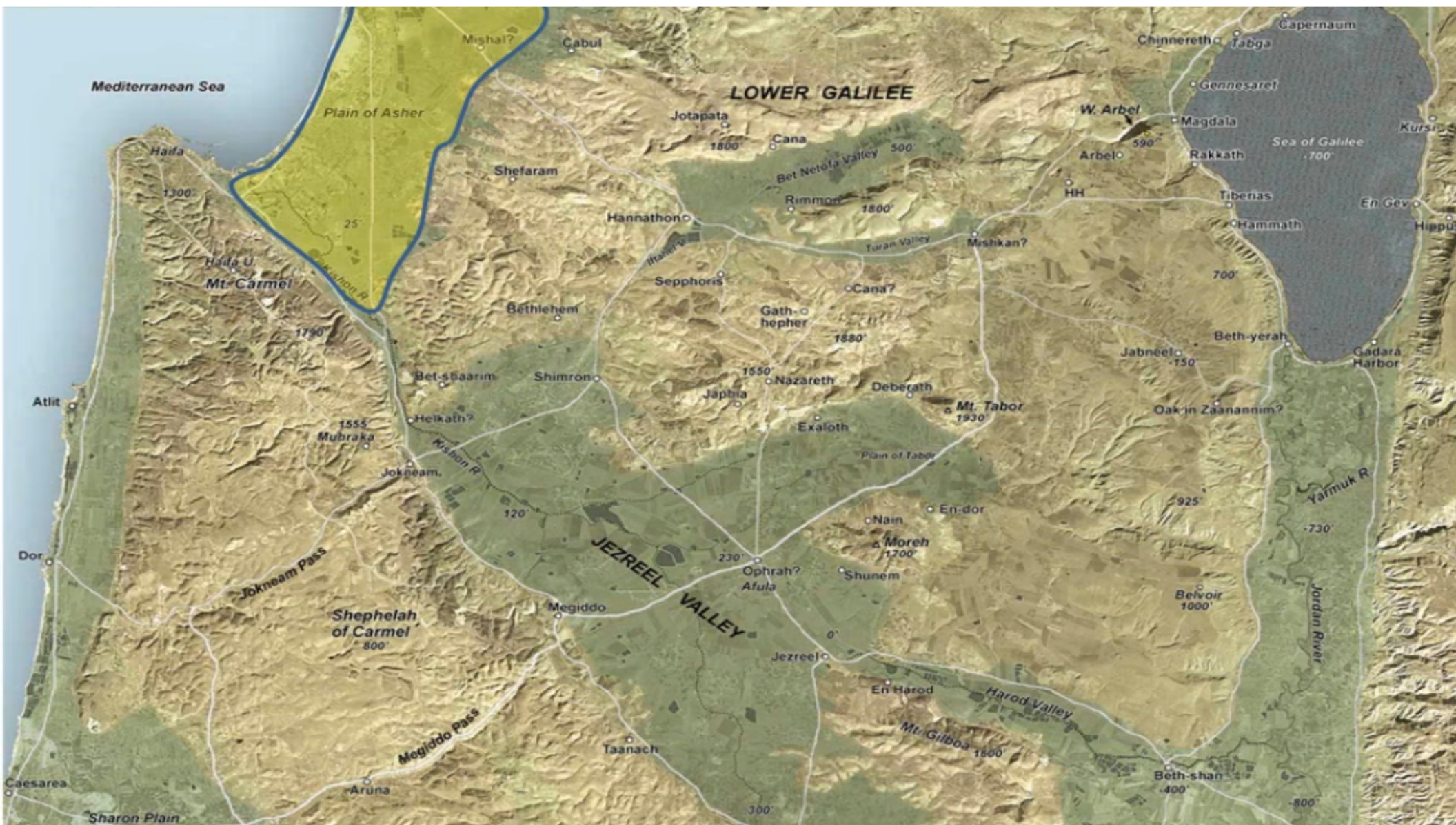




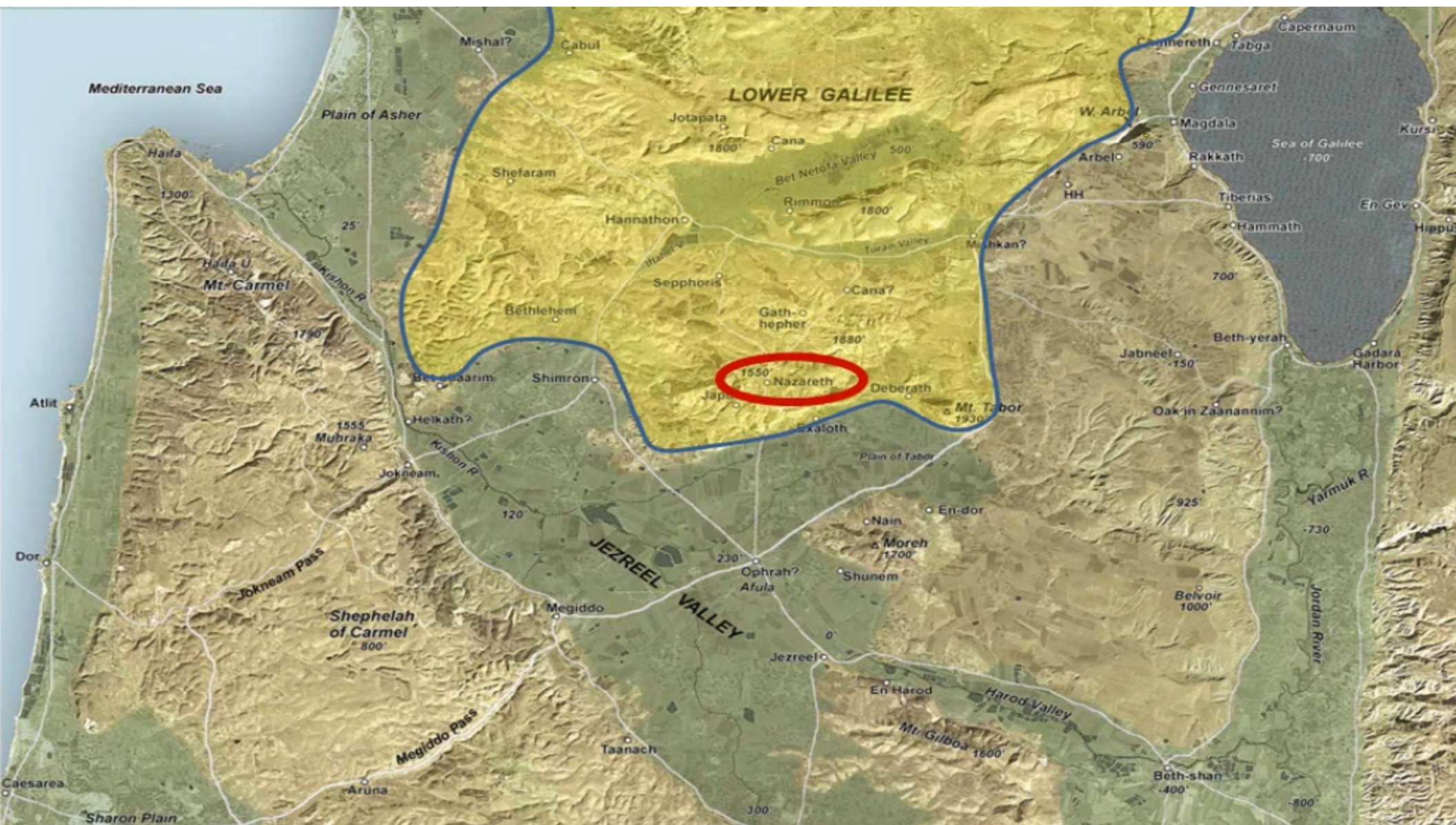








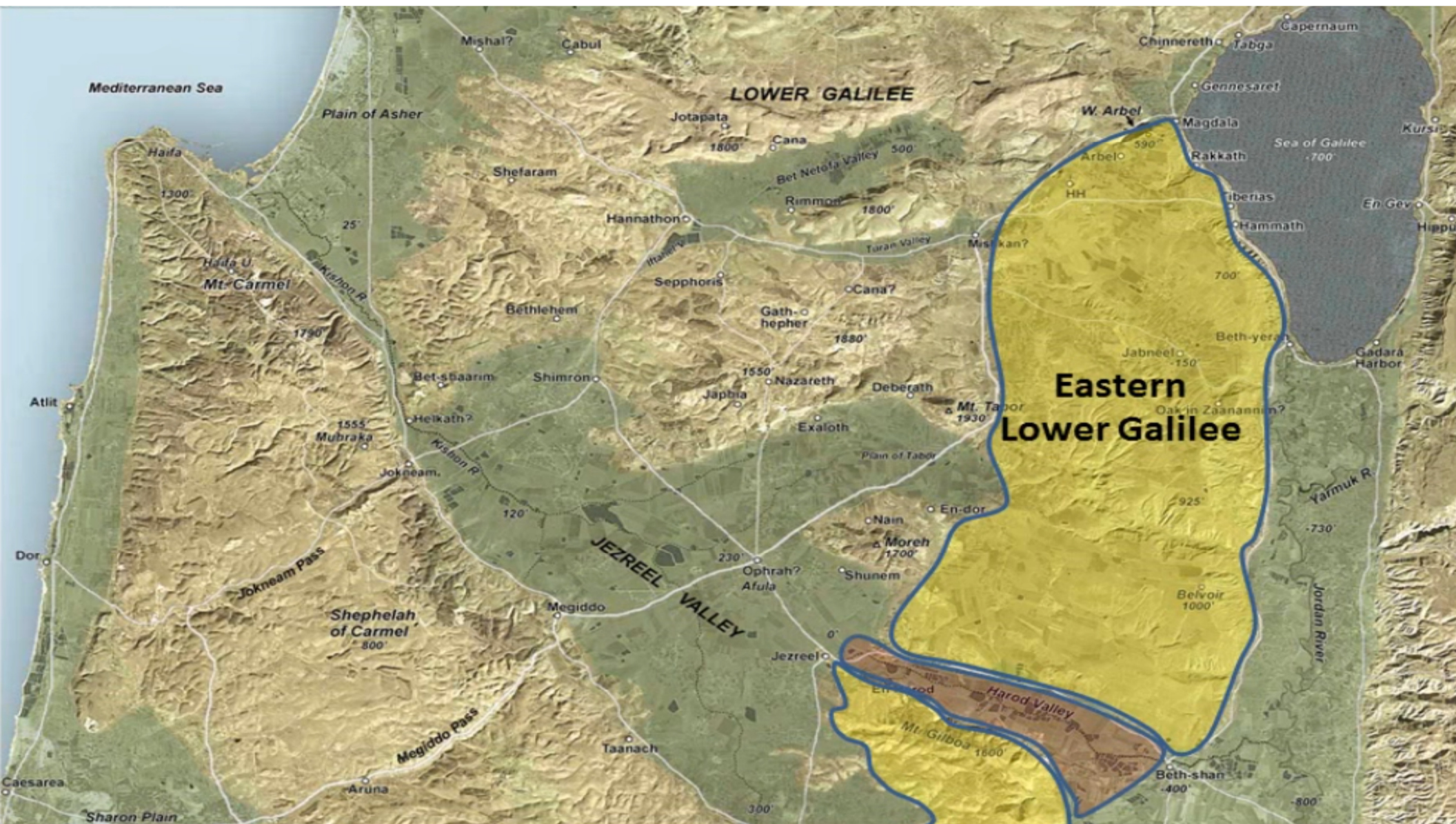




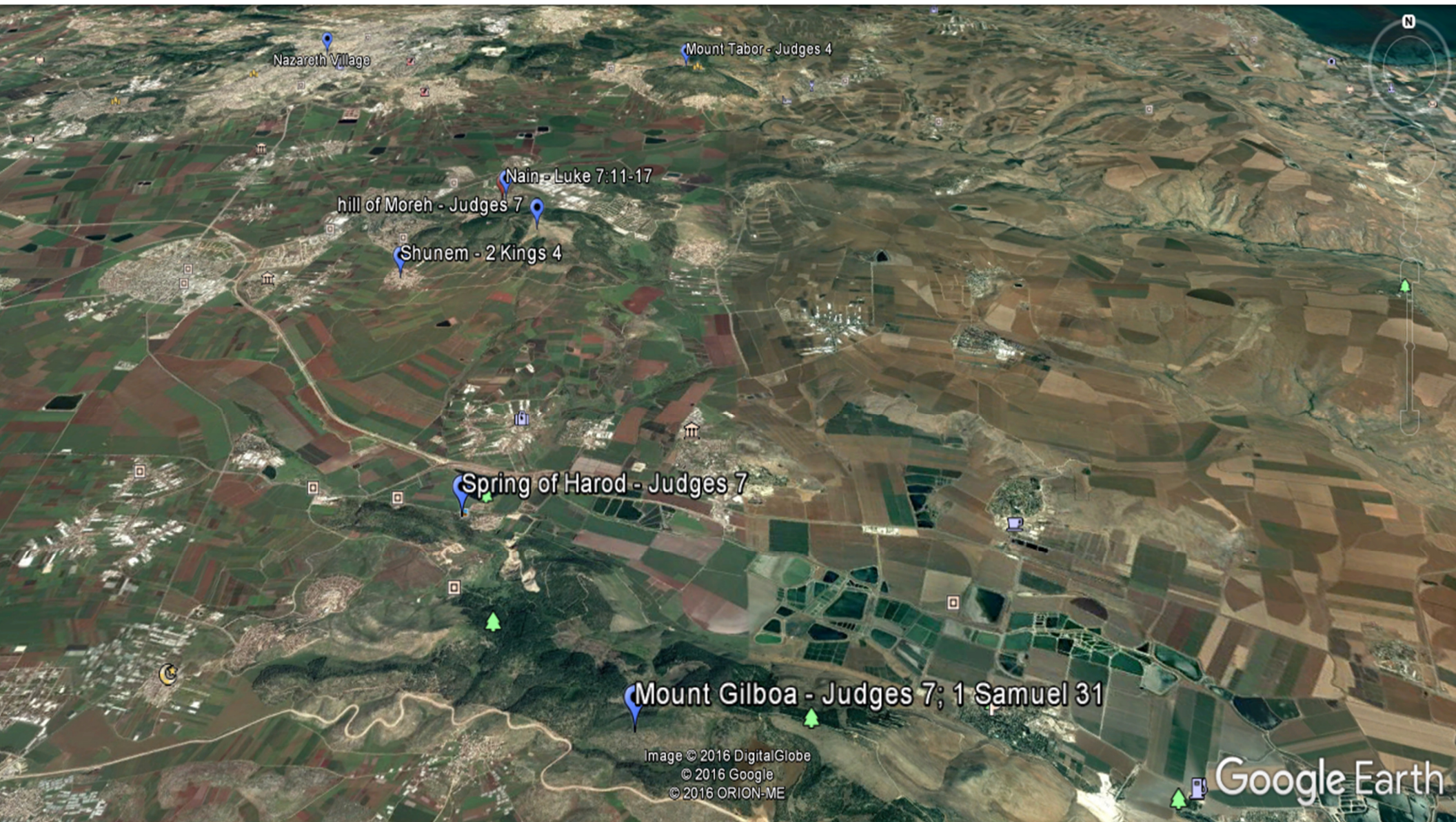












Nazareth Village

Mount Tabor - Judges 4

Nain - Luke 7:11-17

hill of Moreh - Judges 7

Shunem - 2 Kings 4

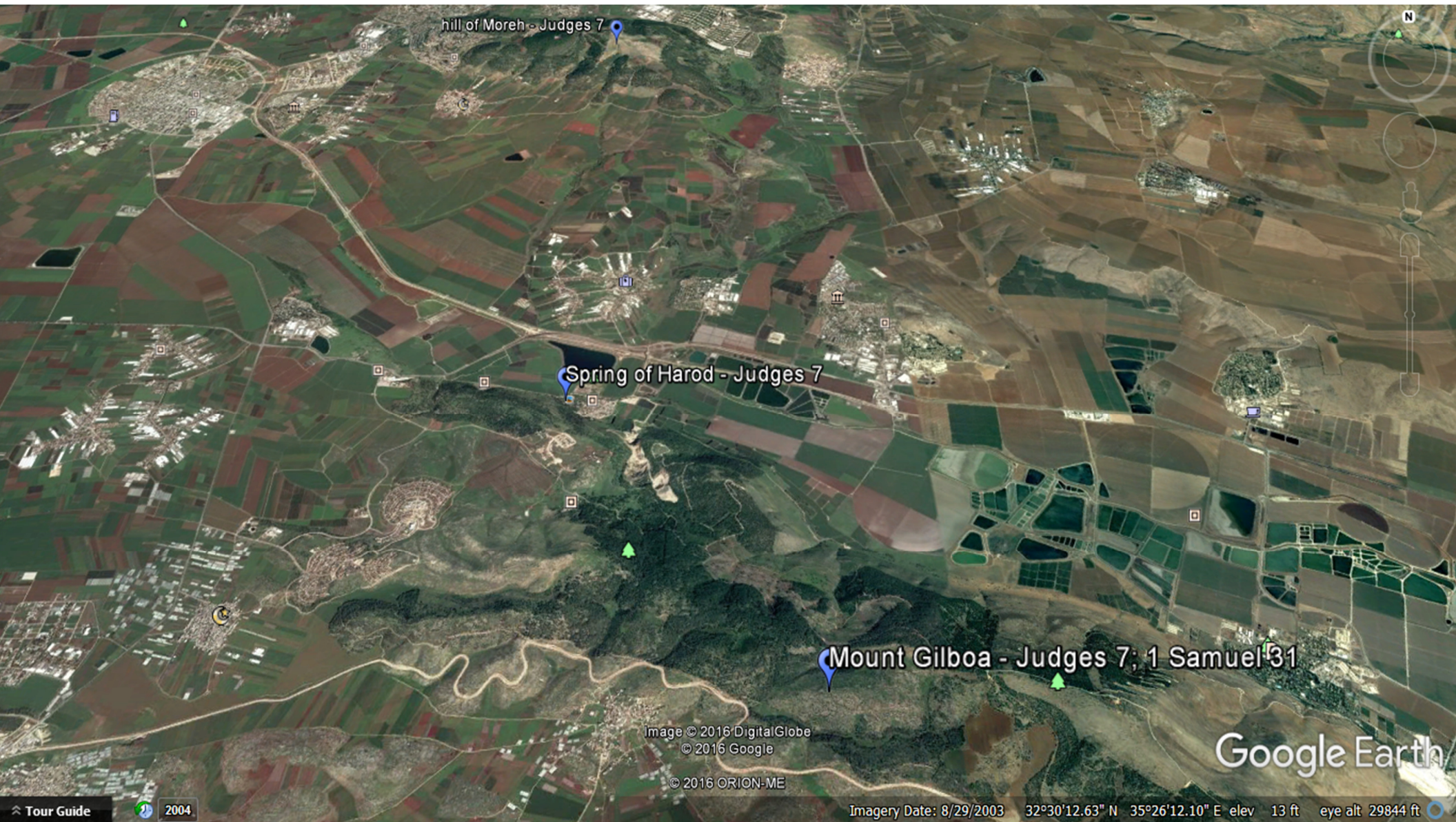
Spring of Harod - Judges 7

Mount Gilboa - Judges 7; 1 Samuel 31

Image © 2016 DigitalGlobe  
© 2016 Google  
© 2016 ORION-ME

Google Earth





hill of Moreh - Judges 7

Spring of Harod - Judges 7

Mount Gilboa - Judges 7; 1 Samuel 31

Image © 2016 DigitalGlobe  
© 2016 Google

© 2016 ORION-ME

Google Earth

Tour Guide

2004

Imagery Date: 8/29/2003 32°30'12.63" N 35°26'12.10" E elev 13 ft eye alt 29844 ft























your hands with a strong net and you may  
down against the camp." So he went with Purah his  
servant down to the outposts of the army that was in  
the camp.

**12 Now the Midianites and the Amalekites and all  
the sons of the east were lying in the valley as  
numerous as locusts; and their camels were  
without number, as numerous as the sand on the  
seashore.**

13 When Gideon came, behold, a man was relating  
a dream to his friend. And he said, "Behold, I had a  
dream; a loaf of barley bread was tumbling into the  
camp of Midian, and it came to the tent and struck

**Judges 7:12**

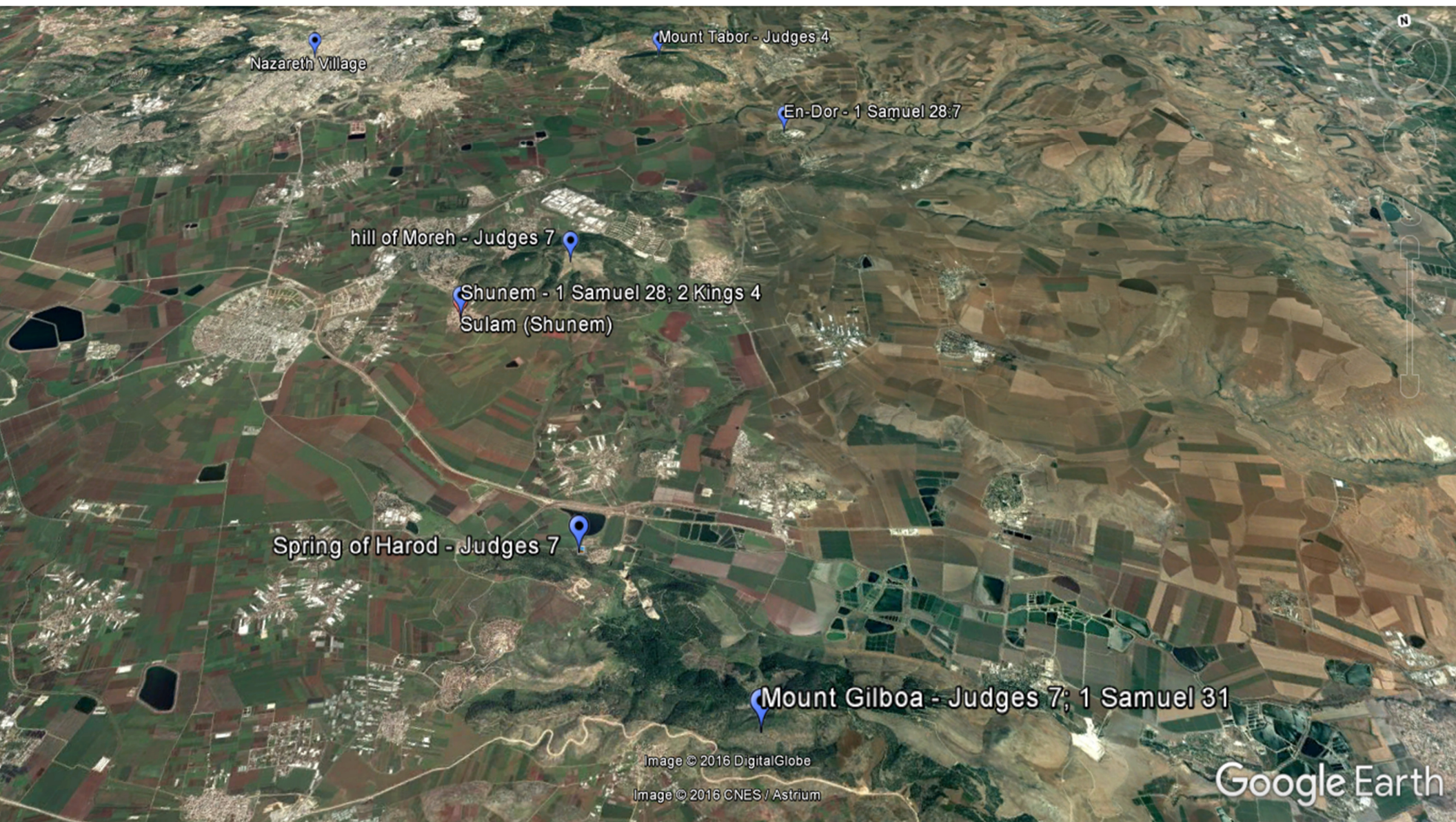


# Lessons to Be Learned

Hill of Moreh

- 1) **Gideon Trusted in The Lord.**
- 2) **Gideon Inquired of God.**
- 3) **His Leadership Helped Turn the Israelites Back to God.**









(C) BibleWa



H6





Jezreel - 1 Samuel 29; 2 Kings 9

The Spring of Jezreel - 1 Samuel 29:1

Spring of Harod - Judges 7

Mount Gilboa

Image © 2016 DigitalGlobe  
Image Landsat / Copernicus  
Data SIO, NOAA, U.S. Navy, NGA, GEBCO

Google Earth





**Hill of Moreh**

**Jezreel Spring**





**Mt. Gilboa**

**Jezreel Spring**

**Jezreel**









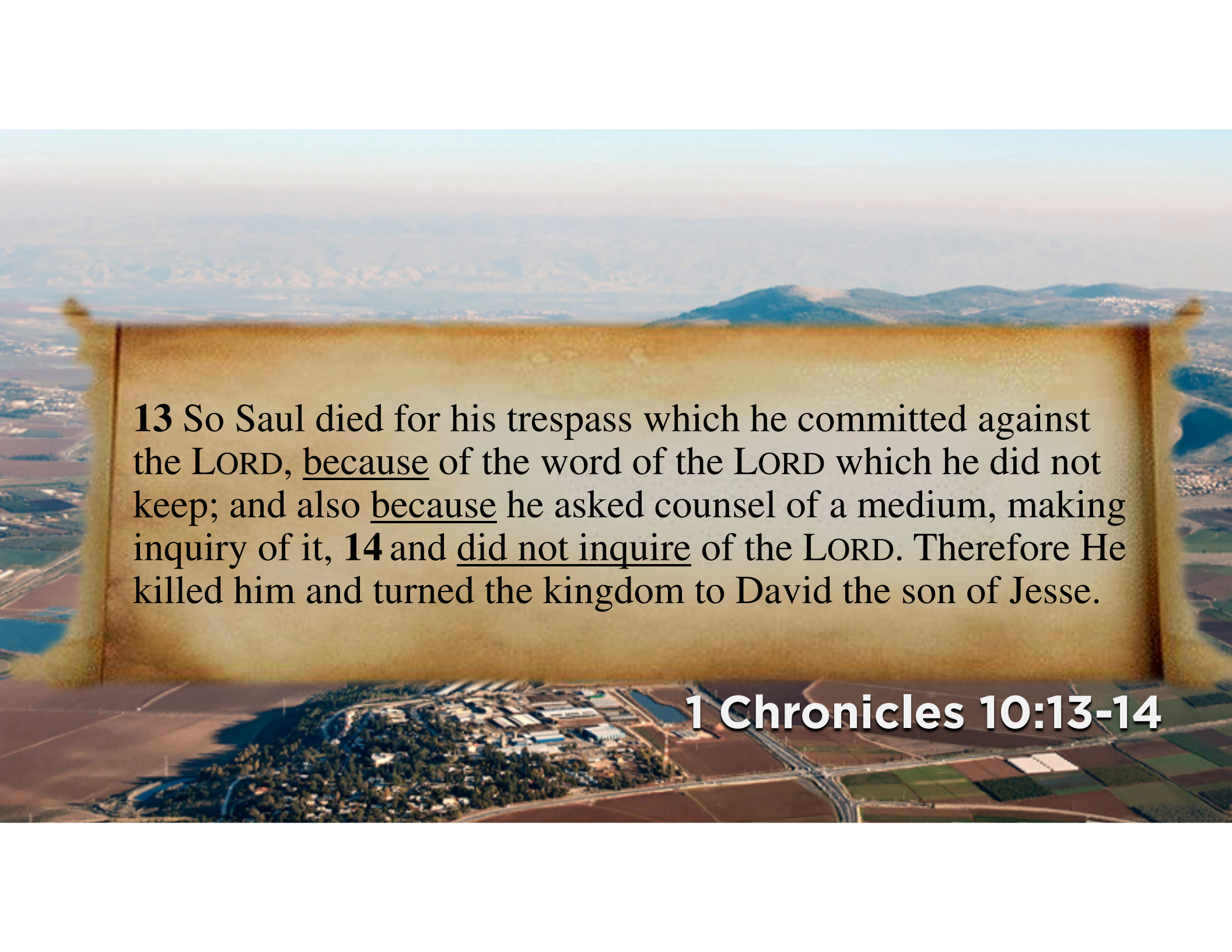


# Lessons to Be Learned

Mt. Gilboa

1) **Good Intentions Did Not Equal Obedience.**



An aerial photograph of a landscape featuring a river, fields, and distant mountains. A large, rectangular, parchment-like overlay is centered in the image, containing text. The text is in a black serif font. The parchment has a slightly aged, yellowish-brown appearance with some texture and a dark border.

**13** So Saul died for his trespass which he committed against the LORD, because of the word of the LORD which he did not keep; and also because he asked counsel of a medium, making inquiry of it, **14** and did not inquire of the LORD. Therefore He killed him and turned the kingdom to David the son of Jesse.

**1 Chronicles 10:13-14**






## **Lessons For Us Today**

**A. Because Saul Rejected God's Word, God Rejected Him.**

1) John 12:44-48

**B. We Reap What We Sow.**

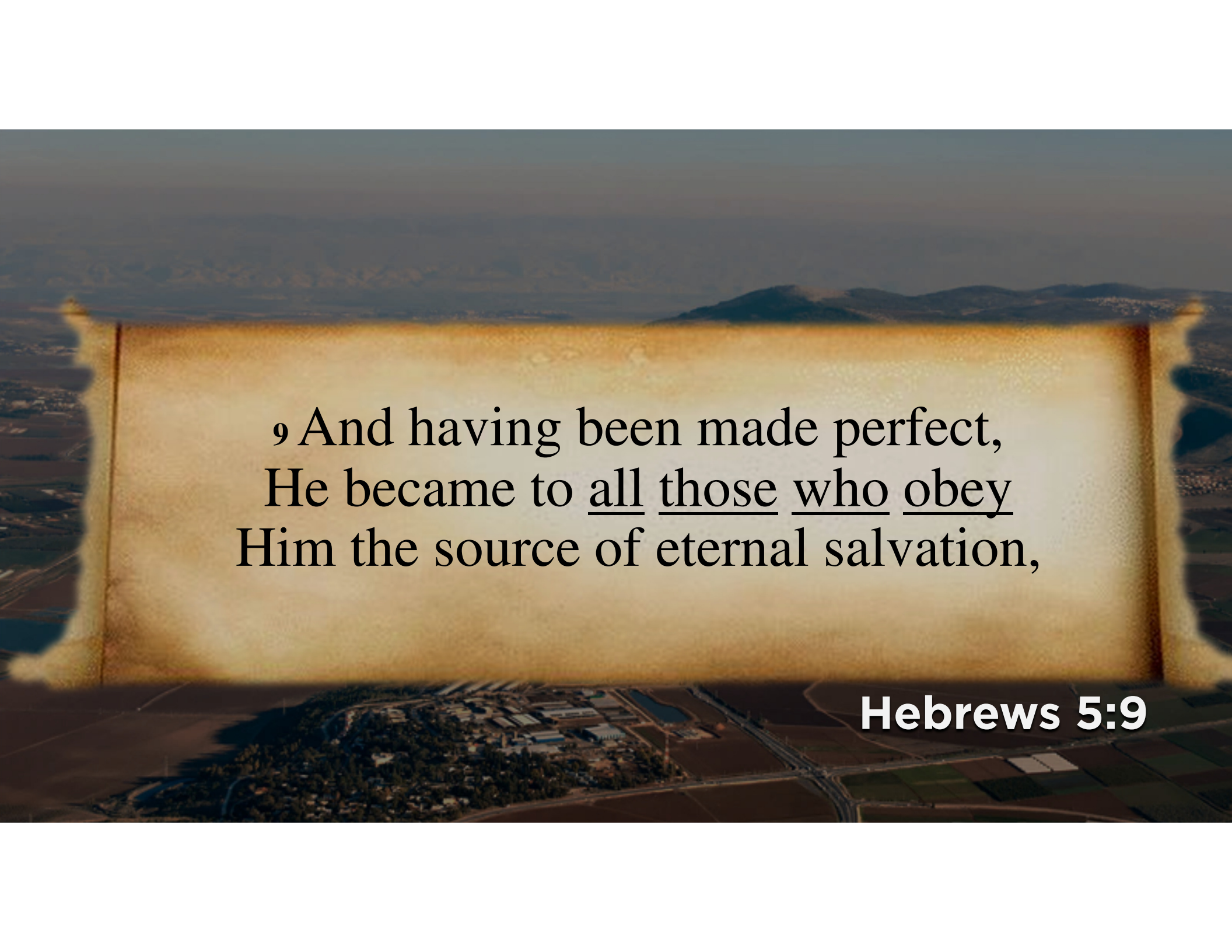




7 Do not be deceived, God is not mocked;  
for whatever a man sows, this he will also  
reap. <sup>8</sup> For the one who sows to his own  
flesh will from the flesh reap corruption,  
but the one who sows to the Spirit will  
from the Spirit reap eternal life.

**Galatians 6:7-8**



An aerial photograph of a landscape featuring a large, glowing, parchment-like rectangle in the center. The rectangle has a textured, aged appearance with a warm, golden-brown glow. The background shows a vast, flat landscape with distant mountains under a hazy sky. In the foreground, there is a small cluster of buildings and a road.

9 And having been made perfect,  
He became to all those who obey  
Him the source of eternal salvation,

**Hebrews 5:9**